

Athabasca Communities In Bloom



Athabasca
District
Chamber Of Commerce



Athabasca District Chamber of Commerce



Click QR code

Enjoy this digital brochure. All QR Codes are clickable links.

WELCOME TO THE
Town of
Shabasca

THE LAND OF WHISPERING HILLS







Athabasca University Campus

Athabasca University (AU) was founded on June 25, 1970. It started as a traditional campus-based institution but had to move to the Town of Athabasca in 1984 due to expansion. You can read more about AU's history and evolution on their official website.





University House

The University House, home of the current President, Dr. Alex Clark, holds a special place in the town of Athabasca. With its spectacular view of the community, it stands as a symbol of the University's commitment to the town and its people.

Academic Research Centre

Built in 2011, The Research Centre stands at the forefront of sustainable design. LEED® Gold certified, the building envelope and HVAC systems are highly tuned to reduce the size of heating and cooling plants in the building.





Community Garden

The Athabasca University Community Garden is a local initiative where gardening enthusiasts grow their own food. Supported by the Alice B. Donahue Library, which provides gardening resources and runs an annual seed library.



Athabasca
University





Athabasca Regional Multiplex Fitness & Aquatic Center

The Athabasca Regional Multiplex Society promotes cultural growth, health, wellness and fitness for all residents in the Athabasca region and offers opportunities to participate in a wide range of activities by providing exceptional recreational, leisure and cultural facilities.

Promoting themes of fitness, health and wellness, the Athabasca Regional Multiplex supports such activities as walking, running, hockey, figure skating, soccer, basketball, badminton, tennis, lacrosse, dance, gymnastics and more.







40 Year of Growing & Sharing Knowledge





Landing Trail Intermediate School

The overarching emphasis at LTIS is to be safe, caring, welcoming and respectful. Landing Trail Intermediate School is a grade 4-6 dual track (English and French Immersion) school. Presently, 335 students attend LTIS.

Located in a unique area nestled beside the Muskeg Creek Trails, known for hiking, biking, and more.



LTIS Outdoor Classroom





Whispering Hills Primary School

Whispering Hills Primary School offers Great Beginnings and Kindergarten to Grade 3 programming in a dual track (K-3 English and French Immersion) program. WHPS is an APPLE School. Striving to promote wellness and create environments that foster lifelong health and wellness.

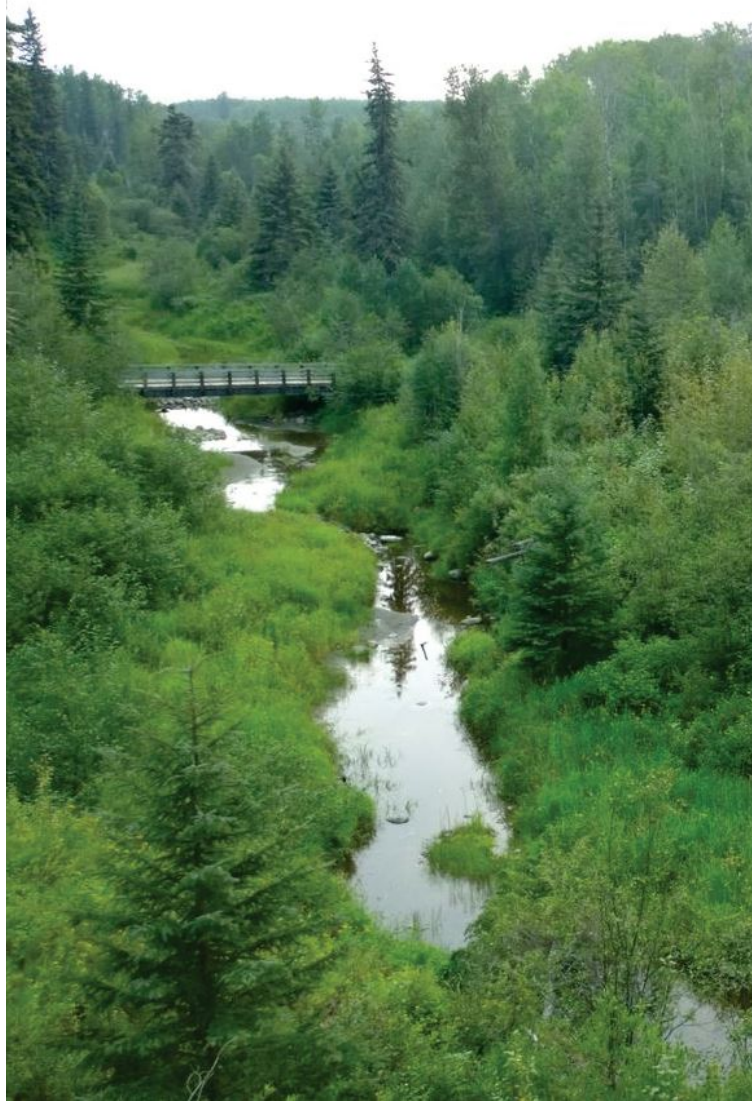




Edwin Parr Composite School

EPC, the largest school in the Aspen View School Division, serving around 700 students from grades 7-12. The school offers a broad curriculum. Such as welding, mechanics, wood shop, fitness, fine arts, cosmetology, gardening, band, general music, art, and a provincially recognized drama program.





MUSKEG CREEK Trails

located within the town limits of Athabasca, Alberta, is a 17.5 square kilometers natural area that offers a variety of recreational activities¹. The park, home to diverse wildlife and rare species of fern, provides opportunities for hiking, jogging, mountain biking, bird watching, and butterfly counting.





Athabasca Northern Nordic Ski Club Chalet

In the winter, the Muskeg Creek trails are maintained and groomed for classic and skate skiing by club volunteers with an Alpina Sherpa pulling a Ginsu groomer. The Chalet is located near the Muskeg Creek trails near LTIS.





Rotary Way

Is a scenic, mostly paved trail that spans the town of Athabasca from east to west. It starts at the Athabasca County Administration office and extends to the Athabasca Regional Multiplex. The trail, which took 28 years to complete, is a testament to the generous contributions of numerous individuals, businesses, Town & County of Athabasca.





Trans Canada Trail Lading Trail

The Athabasca Landing Trail, is a historic 150 km long non-motorized recreational trail that runs from Fort Saskatchewan to Athabasca. It follows the route of the historic Athabasca Landing Trail, also known as "The 100 Mile Portage," built in 1876. The trail is part of the Trans Canada Trail.

Athabasca Landing Trail *The 100 Mile Portage*

You are standing at Athabasca Landing, which is the site of the present town of Athabasca, Alberta. From 1876 until 1913 it was an important trading centre linking the Prairies with the far Northwest. Known locally as "the gateway to the North," commercial development began in 1876 when the Hudson's Bay Company (HBC), seeking a better fur-trade route to the Peace River region, completed construction of the Athabasca Landing Trail from Edmonton. The small HBC port at Athabasca Landing expanded during the 1880s when the company made it the headquarters of a new network of steamboat transportation and the home-port of the SS Athabasca (launched 1888).

During 1897-98 a tenacity at the Landing was the effective starting-out point for adventures following the all-Canadian water route to the Yukon goldfields. Both the Klondike Gold Rush and a lengthy visit by the Indian Treaty and Scrip Commission in 1899 stimulated the growth of a village around the HBC post. During the first decade of the new century, the HBC monopoly was challenged successfully by rival businessmen while the number of steamboats built, docked and serviced at the Landing increased dramatically.

The expanding river traffic, railway fever, and speculative real-estate boom spurred the arrival of thousands of homesteaders and brought rapid economic and demographic growth from 1909 to 1913. In 1911, Athabasca Landing was incorporated as a town, and by August 1913, when its name was changed to Athabasca, the new municipality had a population approaching 2000. However, by 1919 railways had bypassed Athabasca and destroyed its raison d'être as an inland port.

Trail Etiquette

To ensure future use of this trail, please be responsible stewards and abide by the following:

- Trail uses include hiking, cycling, horse back, skiing, and snow shoeing.
- This portion of the Trans Canada Trail is designated non-motorized.
- Please pack out all of your litter and pet waste.
- Respect others, slow down to yield and greet other users.
- Leave natural and historic items for others to discover.
- Stay on the designated trail and respect adjacent private land.
- View wildlife and livestock at a distance. Do not feed or disturb them.

Trail hazards may include but are not limited to:

- wildlife; falling trees; washouts; uneven ground; and infrastructure.

USE AT OWN RISK.

Athabasca to Fort Saskatchewan

Present day local organizations are working to redevelop this route as a non-motorized recreation trail that runs from Lamoureaux, near Fort Saskatchewan to Athabasca. If you would like to volunteer or contribute please contact the number below for local contact information.





Native Friendship Centre

Is a non-profit organization that offers culturally relevant programs and services. It fosters friendship and cooperation among Indigenous and non-Indigenous community members. The centre hosts regular activities like Drop-In Beading, Youth Programs and more. Every Friday, they serve Soup and Bannock. They also run Riddles Thrift Store.





Native Friendship Centre Community Garden

The community garden, established in 2015, located behind Independent. Built by local volunteers and boasts 36 raised garden beds. Enclosed by an 8-foot high game fence, the garden also features a 1200-gallon water tank. The Athabasca Fire Department generously provides the water. Best of all, the garden spaces are free of charge.





Lolly Pop Thrift Shop

Clean and organized.
Clothing, Footwear,
Households, etc All you
need to make your thrifty
dreams come true.
It's all about the kids. Lolly
Pop Thrift Shop supports
children's clubs, groups and
organizations with their
fund-raising goals.
The flowers every summer
make for a beautiful store
front.





Athabasca Main Street 50th St.







Town of Athabasca Office

The Athabasca Town Office, located downtown at 4705 - 49 Avenue, is the administrative heart of the town, serving a population of 2,759 and an additional 8,000-11,000 people in the surrounding areas. It oversees the local economy, which is built on small businesses and jobs in education, health, and social services, forestry, oil & gas.





Athabasca Fire Department

The Athabasca Fire Department, with a proud history dating back to 1911, is a pillar of our community. This dedicated team of professionals is committed to safeguarding the citizens of Athabasca, preserving the quality of life through multi-level emergency response, and protecting life, property, and the environment.





Athabasca Train Station Heritage Value

The Canadian Northern Railway Station (CNoR) in Athabasca, located on the river front, is a historic train station that was built in 1912. It was a major stop for the later on CN Railway and is currently being restored to its former glory by the Athabasca Heritage Society.

This station holds significant heritage value, symbolizing the development of Alberta's railroad infrastructure in the early 1900s. It stands as a community landmark, representing a standard-plan CNoR Station and the rich history of Athabasca.





Athabasca United Church

Built in 1912, is a large wooden structure with Gothic architecture. Survived a fire in 1913 and has been in use for over a century. The church became part of the United Church of Canada in 1925. It was declared a Provincial Historic Resource in 1985. It celebrated its centennial in 2013.





Athabasca Public School

Constructed in 1913-1914, this large, two-storey building, made of red brick with limestone details, stands as a symbol of the town's educational heritage. The Athabasca Public School Conservation Committee, appointed by the Town Council, has embarked on the mission to conserve this historic structure.





Athabasca Historical Sites

St Alban's Anglican Church

St. Alban's Anglican Church, constructed between 1912 and 1915, is a historic landmark in the Athabasca Landing area, built to serve the needs of incoming settlers. The church's construction was spurred by the completion of the Canadian Northern Railway branch line to Athabasca Landing in 1912. Reverend Robert Little, an active Anglican clergyman in the area, led the initiative to build the church, with land donated and funds for materials sourced from England.



Historical Sites



St Alban's



The Magnificent River Rats Festival

This two-day event, held during the Canada Day weekend, is a beloved tradition that unites our community with an array of music, food, and entertainment. Mark your calendars for the Canada Day weekend and don't miss out on this family-friendly festival that truly captures the heart of our community!

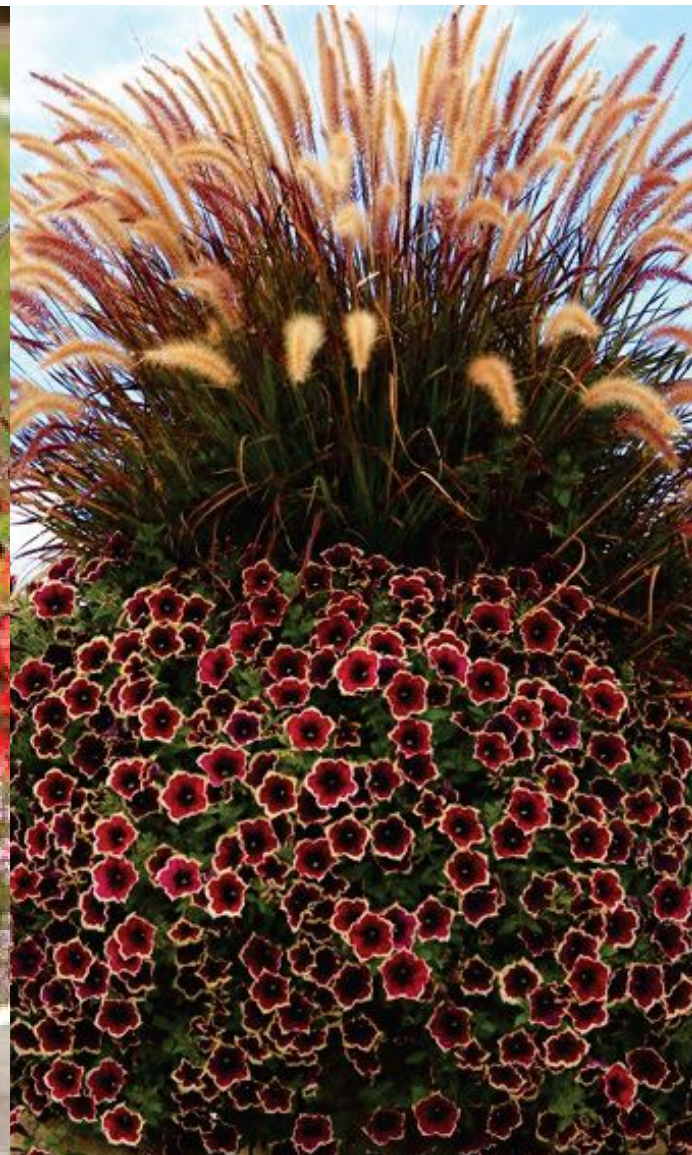


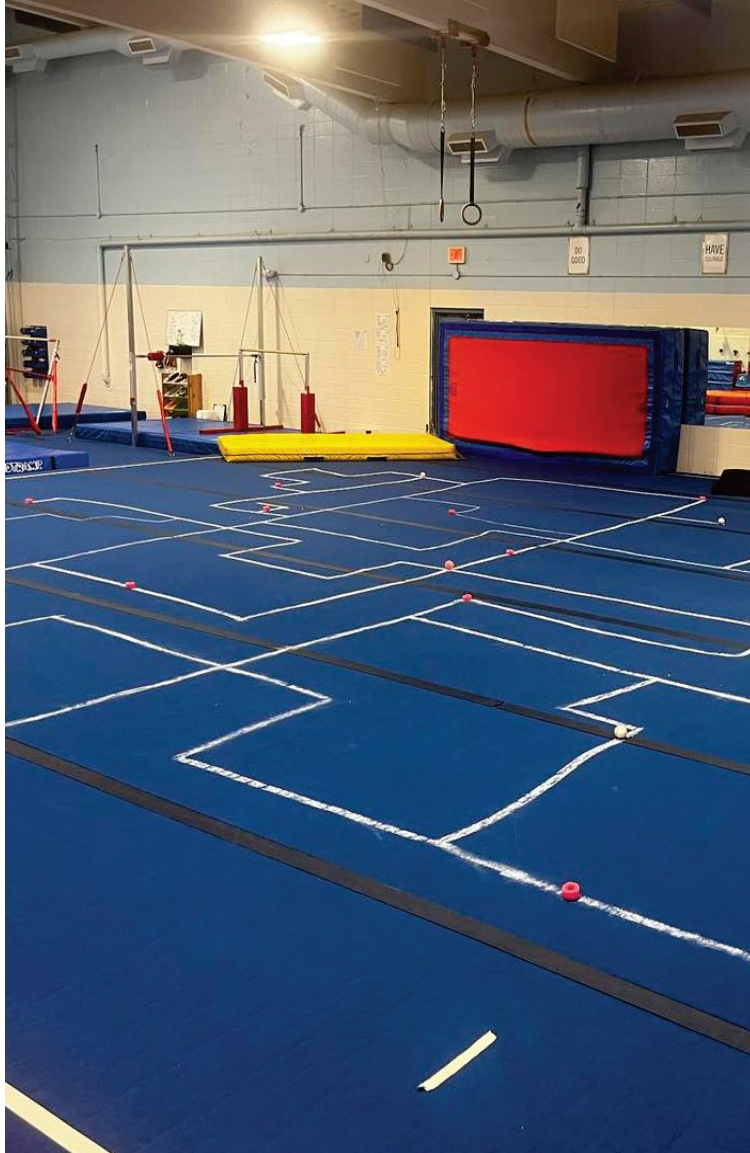


Nancy Appleby Theatre

The Nancy Appleby Theatre, a cultural cornerstone in Athabasca for over 25 years, boasts a 780-square-foot stage suitable for a wide range of performances. The theatre is equipped with 280 seats. It has hosted numerous local, national, and international productions. It is operated by the Athabasca Regional Multiplex.







Athabasca FLIPS Gymnastics Club

Is a not-for-profit organization dedicated to promoting the sport of gymnastics in the community. They offer various programs, including the Xcel program. The club aims to provide opportunities for each gymnast to reach their full potential, promote personal development, and foster a sense of team spirit.





Alice B. Donahue Library & Archives

Mission: The Alice B. Donahue Library and Archives is dedicated to providing library and information services, archival services and materials to further the educational, recreational, and cultural needs of the residents of the Town of Athabasca and Athabasca County, and to preserve the heritage of Athabasca and region.





Athabasca Seniors Centre

Welcomes individuals aged 50 and above, offers an affordable membership at just \$15 per year. This society is not only a dynamic gathering place that hosts activities and functions, but also provides an excellent opportunity for seniors to connect with like-minded individuals, enhance their skills, and participate in enriching experiences.





Athabasca Legion Branch 103

The Athabasca Legion Branch 103, located in Athabasca, is a part of the Royal Canadian Legion, a non-profit organization supporting veterans and their families. They are actively involved in the community, hosting events like open crib games and more. They continue to serve as a vital part of our community.



Athabasca East Hill





Athabasca Regional Waste

Established in 1999, its a significant corporation in Athabasca, Alberta, offering a variety of waste management services including waste and recycling handling, bin rental, and waste diversion.



Blue Heron Bottle Depot

Is a significant establishment in Athabasca, Alberta. It is a part of the Blue Heron Vocational Training Centre, a non-profit society that provides important community services to people with developmental disabilities.







Athabasca Golf & Country Club



Golf Club & Fox Den Restaurant

The Athabasca Golf and Country Club, originally a nine-hole layout designed in 1963, was expanded to a full eighteen holes in 1995 by Sid Puddicombe. After a recent \$1.8 million renovation, it now boasts the 4th most difficult challenges in all of Canada. While at the course, stop in The Fox Den Restaurant for picturesque views of the Athabasca River valley as you enjoy your meal.



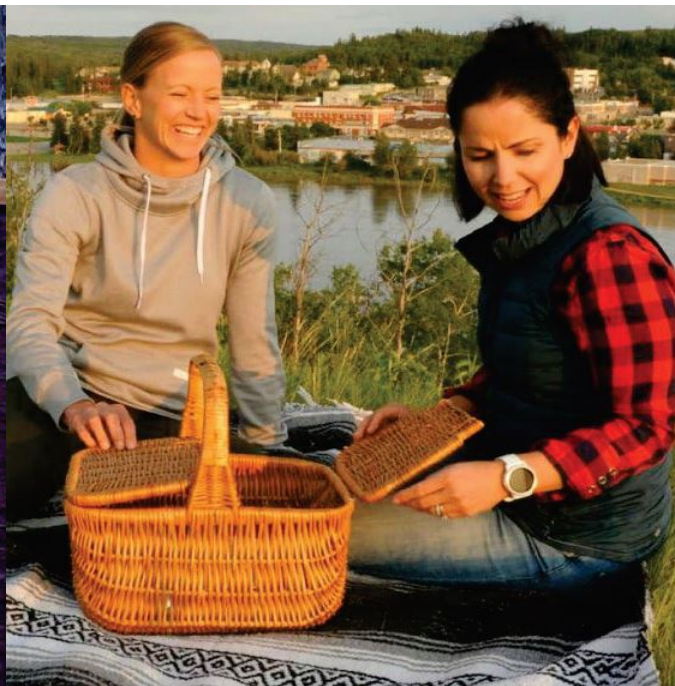
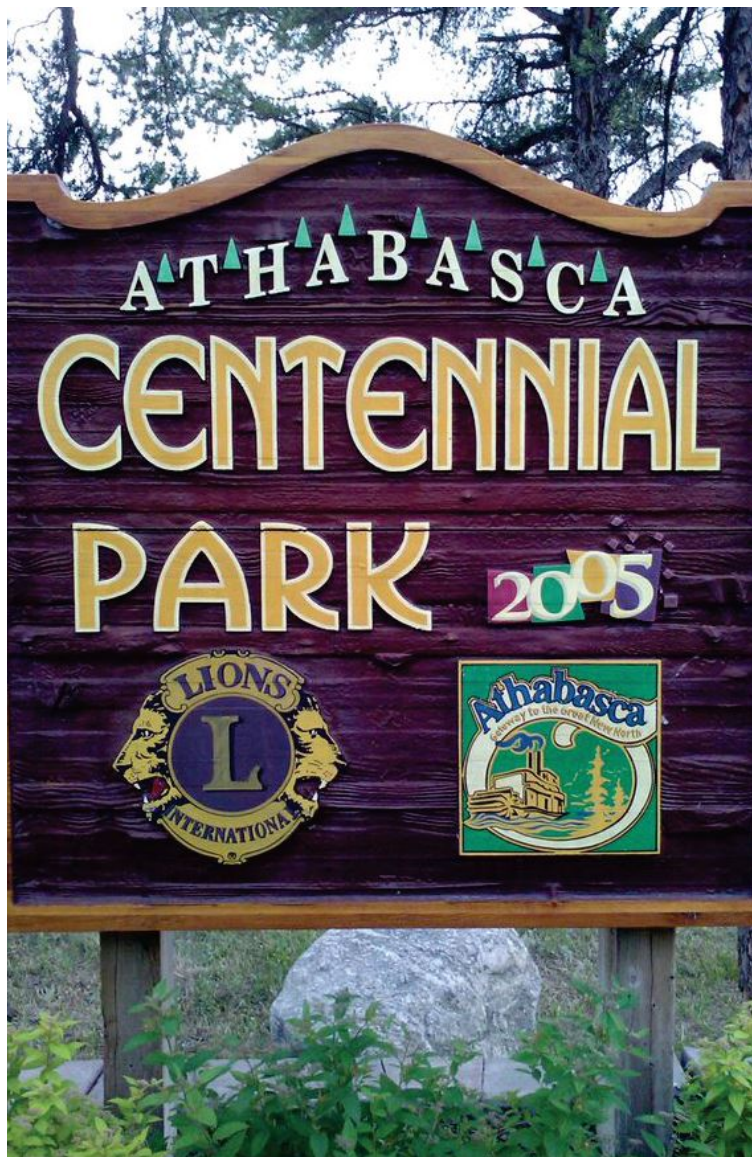
Golf Club



Fox Den



Residential



Lions Centennial Park

Located in Athabasca, is a significant community space celebrated for its beautiful views over Athabasca. The park is a testament to the community spirit of Athabasca and the enduring service of the Lions Club. It's a great place for community gatherings and enjoying the outdoors. It's a great place for community gatherings and enjoying the outdoors.





Wood Heights Road

The Wood Heights Road subdivision in Athabasca, Alberta is a rural residential area located just at the edge of the Athabasca Corporate limits. It also features a well-maintained playground.



Cornwall

Is a vibrant community that is home to the Whispering Hills Primary School. The community also boasts a fantastic public park, providing a safe and fun environment for children to play and explore.





Athabasca Cemetery

Located in the heartland of Alberta, Canada, is a tranquil and solemn space for remembrance and reflection. The cemetery provides a dignified resting place for loved ones, with comprehensive burial options to meet individual needs and preferences. Recently, a new mausoleum has been added to the cemetery, further enhancing its facilities.





County of Athabasca Office

The Staff are committed to serving the community and contributing to the region's growth and development. They are a key part of the vibrant and dynamic Athabasca community. Whether you have questions about what Athabasca County can do for you, or need assistance with specific services, the friendly and knowledgeable staff are ready to help.





Aspen Regional Water Services Com.

The Aspen Regional Water Services Commission is a key provider of water services in Athabasca County, Alberta, Canada. It was formally established in 2008.



Athabasca Public Works

Public works in Athabasca County and the town of Athabasca, are a testament to the power of collaboration and shared responsibility. They work together on various projects to ensure the smooth functioning of public services.





Residential



Residential



Residential



Residential



Pleasant Valley Lodge

Located in Athabasca, and operated by Greater North Foundation. PVL is a warm and caring environment for seniors who need assistance with daily living tasks. This 56-unit facility provides a congregate supportive living setting for senior citizens who are functionally independent but prefer not to maintain their own homes.





Hees Estates

Hees Estates is a subdivision located in Athabasca. This neighborhood is known for its executive-style family homes, offering a blend of comfort and elegance.



Canyon Road

Offering a unique blend of rural tranquility and urban convenience. This picturesque neighborhood is a haven for those who appreciate the beauty of nature with great views of Muskeg Creek and home to Jewell's Ballpark.





River Front Park

Houses a skate park, attracting local skateboarders. The Rotary Spray Park is a popular spot for cooling off during the summer, while the Lions Playground keeps children engaged. The park also features a boat launch for those interested in boating on the Athabasca River. Also, several firepits are located throughout the park for visitors to use.



Acknowledgements

We extend our heartfelt gratitude to the community members who generously provided photography and allowed their private properties to be photographed for the Communities in Bloom 2024 booklet.

A special thank you to Athabasca Home Town Printing for their kind donation of printing services. We also appreciate the design work donated by LogoMeThis.

Thank you to Birch Meadows Greenhouse for keeping our flowers alive. We also extend our gratitude to the volunteers who tirelessly work to ensure that the Communities in Bloom initiative continues to flourish in Athabasca.



All logos are links on this page.